



Creation WellPoint

High Traffic Luxury Vinyl Tile

Gerflor[®]



Cover: 1024 Canna and 1032 Rousay



1019 ISLA

7" x 48"




Developed in collaboration with healthcare specifiers, Creation WellPoint includes two harmonizing patterns in a curated neutral palette intended to promote health and well-being. Creation WellPoint's durable construction offers excellent stain, scuff and scratch resistances for easy ongoing maintenance.






1029 DONAN

 12" x 24"




1018 ORKNEY

 7" x 48"




1017 SKYE

 7" x 48"




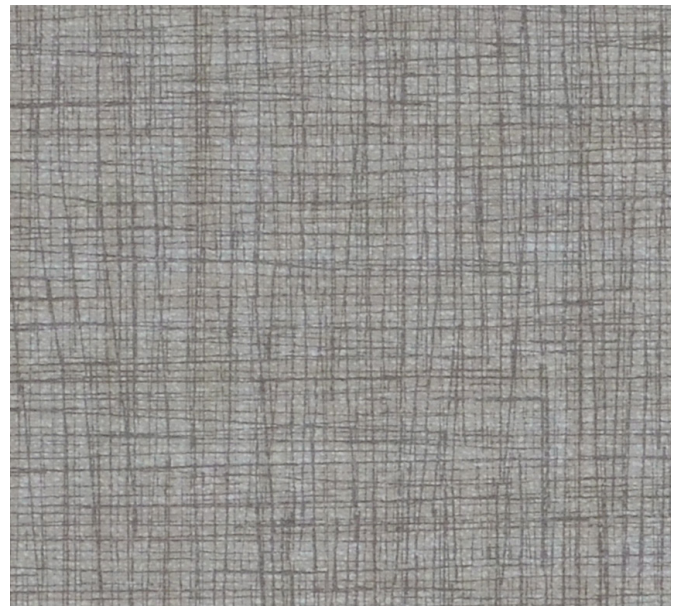
1025 MULL

 12" x 24"




1019 ISLA

 7" x 48"




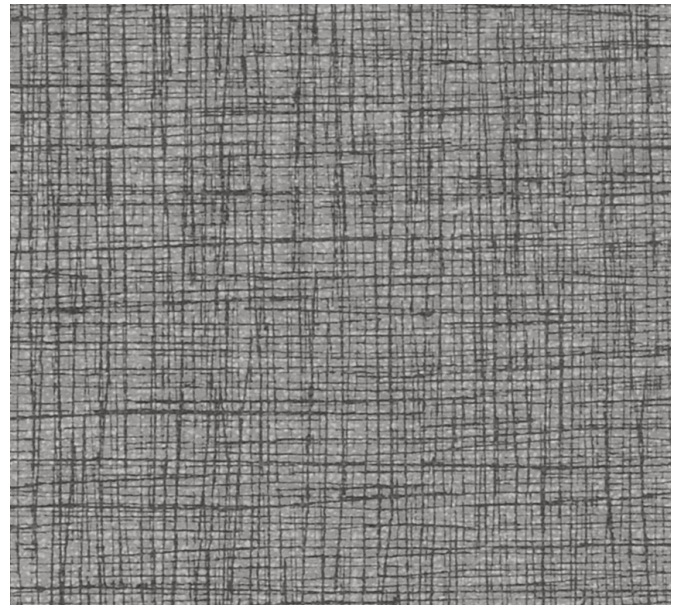
1026 AILSA

 12" x 24"




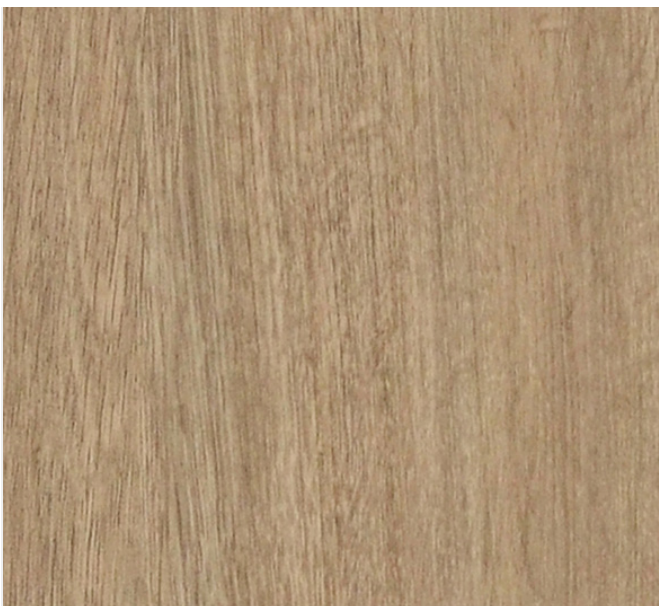
1022 IONA

 7" x 48"




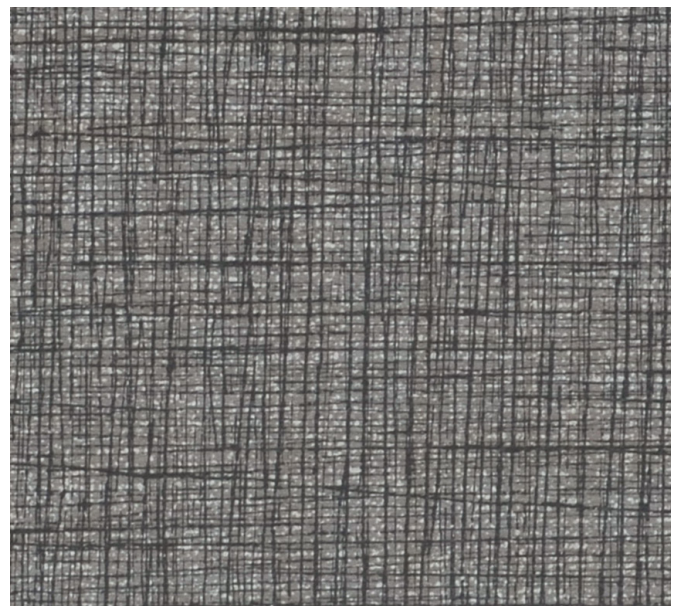
1027 BRURAY

 12" x 24"




1020 JURA

 7" x 48"




1028 DANNA

 12" x 24"




1029 DONAN

 12" x 24"




1021 ARRAN

 7" x 48"




1023 LISMORE

 7" x 48"




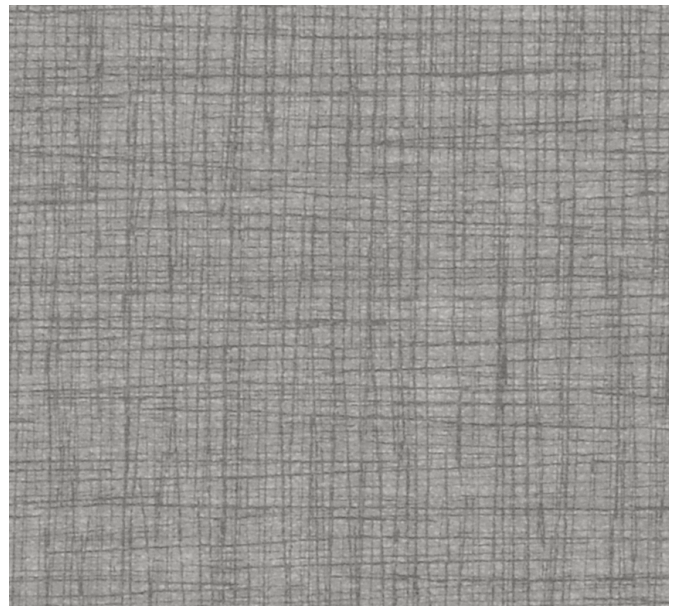
1030 FARA

 12" x 24"




1022 IONA

 7" x 48"




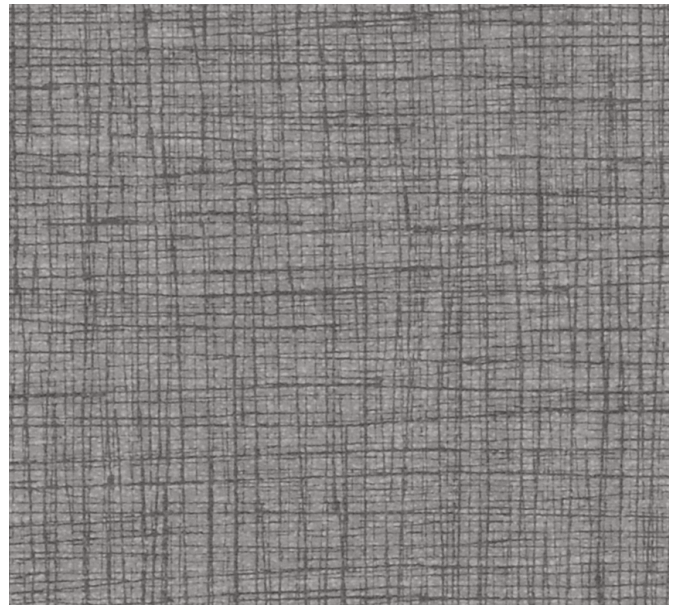
1030 FARA

 12" x 24"




1023 LISMORE

 7" x 48"




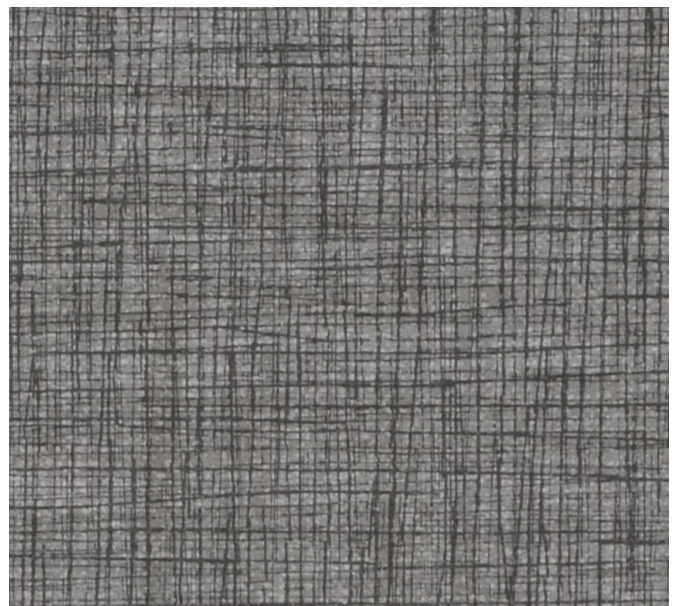
1031 HIRTA

 12" x 24"




1024 CANNA

 7" x 48"



1032 ROUSAY

 12" x 24"



GERFLOR USA
 877.437.3567
 samples@gerflorusa.com
 orders@gerflorusa.com

Made in USA

gerflorusa.com

DESCRIPTION	STANDARDS	REQUIREMENTS	CREATION WELLPOINT
PRODUCT DESCRIPTION			
Reference Specification*	ASTM F1700	-	Class III Type B
Construction	-	-	Luxury Vinyl Tile
Surface Treatment/Maintenance	-	-	PUR+ Matte
Gauge Total Thickness	ASTM F386	-	0.1" (2.5 mm)
Wearlayer Thickness	ASTM F410	-	20 mil (0.5 mm)
Backing	ASTM F1303	-	100% Recycled Material
Plank & Tile Sizes	-	-	7" x 48" / 12" x 24"
PERFORMANCE			
Static Load Resistance	ASTM F970	≤ 0.005"	Meets Requirements
Dimensional Stability	ASTM F2199	< 0.02"	Meets Requirements
Dimensional Squareness	ASTM F2055	-	Meets Requirements
Indentation - Residual	ASTM 1914	≤ -8%	Meets Requirements
Flexibility	ASTM F137	> 1"	Meets Requirements
Chemical & Stain Resistance	ASTM F925	-	Meets Requirements
Resistance to Heat	ASTM F1514	-	Meets Requirements
Resistance to Light	ASTM F1515	-	Meets Requirements
Coefficient of Friction	ASTM D2047	-	0.65 (leather) / 0.82 (neolite)
Impact Insulation (IIC)	ASTM E989 (ASTM E492)	-	39 dB
Fire Rating - Flame Spread	ASTM E648	Class 1	Meets Requirements
Smoke Density (Flaming and Non-Flaming)	ASTM E662	-	Meets Requirements
ENVIRONMENT HEALTH & SAFETY			
Manufacturing Plant Certifications	ISO 9001	-	Meets Requirements
Environmental Product Declaration (EPD)	LEED v4.1 MR BPDO	-	Product-Specific Type III
Material Ingredients: Health Product Declaration (HPD)	LEED v4.1 MR BPDO	-	Self-Declared
Material Ingredients: REACH Optimization	LEED v4.1 MR BPDO	-	100% REACH Compliant
Sourcing of Raw Material: Recycled Content	LEED v4.1 MR BPDO	-	30% Average Pre-Consumer Content
Indoor Air Quality / Low Emitting Materials	LEED v4.1 EQc2	-	FloorScore® Certified
Production Waste	LEED v4.1 EQc3	-	100% Manufacturing Waste Recycled
TVOC after 28 days	ISO 16000-6	-	≤10µg/m3
WARRANTY	20-year limited manufacturer warranty when installed in accordance with Gerflor's installation instructions on gerflorusa.com		

*Rubber leaves indelible stains on synthetic floorings: do not use mats with rubber backing and replace tubular furniture feet with those made of PVC or polyamide. Place mats of sufficient length at entrances to reduce outside sources of dirt.

** The best defense against the spread of infections is the implementation of an effective cleaning method.

For the most updated documentation and specification content, please visit gerflorusa.com.



GENA0135 - CREATION WELLPOINT USA BINDER 2023